



MASS GRADING & EXCAVATION



EARTHWORK



Earth Basics is a General and Heavy Civil Engineering Contractor with over 23 years of experience in residential and commercial industrial projects. As a family owned and operated company, our team is committed to changing the earth moving industry through California and Texas. Our team has the ability to work directly with developers, owners and general contractors, and our experience, company assets, and technological advancements allow us to deliver unparalleled performance. We continually strive to maintain strong relationships and constantly improve our processes.

Over the years, we have seen almost every challenge imaginable. Our diverse and experienced crews have what it takes to tackle any obstacle head on. We stand by our work and take pride in laying the groundwork for the future. Our success stems from the core beliefs we hold:

INNOVATIVE

We are a firm believer in overplaying our projects. This helps to ensure that our crews and machines are working at their optimum capacity. Our adaption to the progression of technology allows us to stay ahead of our competitors, which in return ensures that costs and times are reduced. The end results are major savings for our clients.

INTEGRATED

We approach each hurdle on others' projects as if they were our own, and we resolve them with honesty and integrity. From the field to our office, the Earth Basics team works hand in hand across all departments to ensure efficiency and timeliness.

INSIGHTFUL

Having a full understanding of a project is our specialty. We project clear, concise communications and forward-thinking tactics to our team constantly. Our commitments span decades—you can feel comfortable knowing our combined experience totals over 240 years in the industry.

“OUR COMMITMENTS WITH EVERY JOB WILL ALWAYS BE WITH THE CLIENT, SAFETY, AND THE ENVIRONMENT.”



OUR SERVICES

GENERAL ENGINEERING / MASS GRADING / EXCAVATION

IMPORT / EXPORT / LAND CLEARING / EROSION CONTROL

SITE DEMO COST ANALYSIS / LEVEES & FLOOD CONTROL

1994
YEAR EST

1,000,000,000
CUBIC YARDS OF
EARTHWORK MOVED

700+
PROJECTS
COMPLETED

"Fullmer Construction has relied on Earth Basics to provide knowledgeable service, timely construction and competitive pricing. Their extensive history of work in the Southern California area gives them a distinct advantage in understanding the local soil conditions and municipal hurdles. Using up to date technology they attack each project with knowledgeable staff and reliable equipment. Earth Basics is a valuable contractor for both Fullmer and our clients."

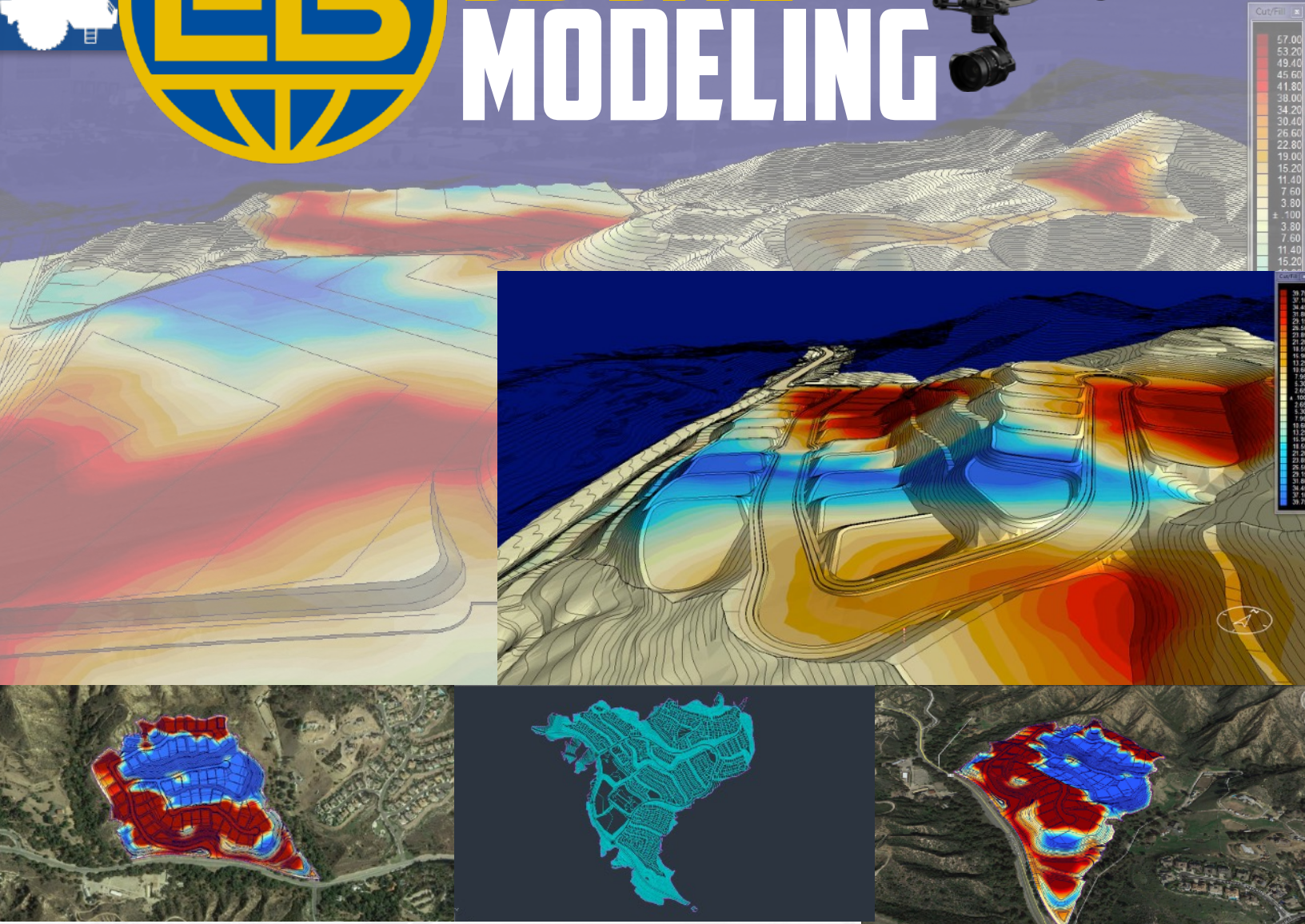
Matthew MacRitchie - Head of Estimating - Fullmer Construction

"For over twenty years, we have been using Earth Basics as a grading contractor. Earth Basics has always been fair with costs, numbers, and efficiency in the field. It always impresses me when the owner shows up on the job site to deal with problems or issues that may arise. Bob Pecoy is that type of owner and does just that." **Kelly LePere - Vice President-Norm Wilson and Sons**





3D SITE MODELING



ADVANTAGES OF 3D SITE MODELING

- REDUCES COST
- IMPROVES EFFICIENCY
- INCREASES SPEED OF CONSTRUCTION
- INCREASES PRODUCTIVITY WITH EACH MOVE
- CREATES CLEAR VISUALIZATIONS OF FUTURE WORK
- INTEGRATES AERIAL IMAGERY WITH ON- SITE MACHINES

PROJECTS



GLEN HELEN PARKWAY DISTRIBUTION CENTER - SAN BERNARDINO, CA

Some of the toughest challenges seem to arise when you least expect them. Our Glen Helen project seemed to start off on a rocky road—quite literally! When the first soils report came in, it looked as if it would be smooth sailing in Southern California. However, after a test dig revealed a bed of large rocks just below the visible surface of the job site, the Earth Basics team adjusted quickly to create a new plan of attack.

Normally, this re-routing could take weeks, putting the entire project behind schedule. However, a new batch of specified equipment was gathered and directed to the job site within a few days, keeping the timeline current and the finish line in sight. It's just another example of how Earth Basics stays agile in response to changing conditions, finding solutions for dealing with the unknown.



SOUTHPORT LOGISTICS CENTER - DALLAS, TX

Another project in the books! Southport Logistics Center consisted of 2.3 million cubic yards moved, which resulted in 1.5 million square feet worth of new logistics buildings located 10 miles from downtown Dallas. With the massive amount of rain that fell in 2015-2016, causing the wettest conditions in over 100 years, our crews tackled the water detention system early to help with dewatering of the site. We were able to deliver on time and within budget. These types of multi-million cubic yard projects are what Earth Basics is designed to tackle.



CITRUS II - LOMA LINDA, CA

Our newest residential project with KB Home is a perfect medium-sized project for our team. This 30-acre, 400,000 cubic yard site was a former citrus tree grove, which required the removal of organic vegetation. Following the clearing and preparation of this property, our team began the OX and exportation of the native clay-like materials. Clay can sometimes be tricky, but in this particular case, lots of proper watering ensured the materials were in prime condition for exporting. Currently, our team is on schedule, and we expect to complete this project in Q1 of 2018.



WWW.EARTH-BASICS.COM



